



**Flange Stripper LT, LW**

## Volvo standard

Kaller is the Volvo standard for gas springs, hydraulic cams and roller cams. In the downloads here you find the Volvo part numbers for all Kaller parts that are Volvo standard.

- **GREEN**: Preference 1. The items that are "first choice" have the Volvo part numbers marked green.
- **YELLOW**: Preference 2. The items with yellow Volvo part numbers can be used if the green marked alternative is impossible to use in the specific case.
- **UNCOLOURED**: The items with uncoloured Volvo part numbers must not be used for new design, only for replacement in old dies.

Items that are not provided with Volvo part numbers can be used after confirmation from Volvo: please contact [glarss16@volvocars.com](mailto:glarss16@volvocars.com) or your technical contact person at Volvo.

---

# Flange Stripper LT, LW

The Flange Stripper is for use in flanging dies for stripping the part after the flanging operation. It is available for top mount and wall/bottom mount, with stroke lengths of 50 and 80 mm.

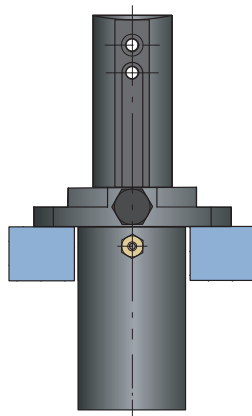
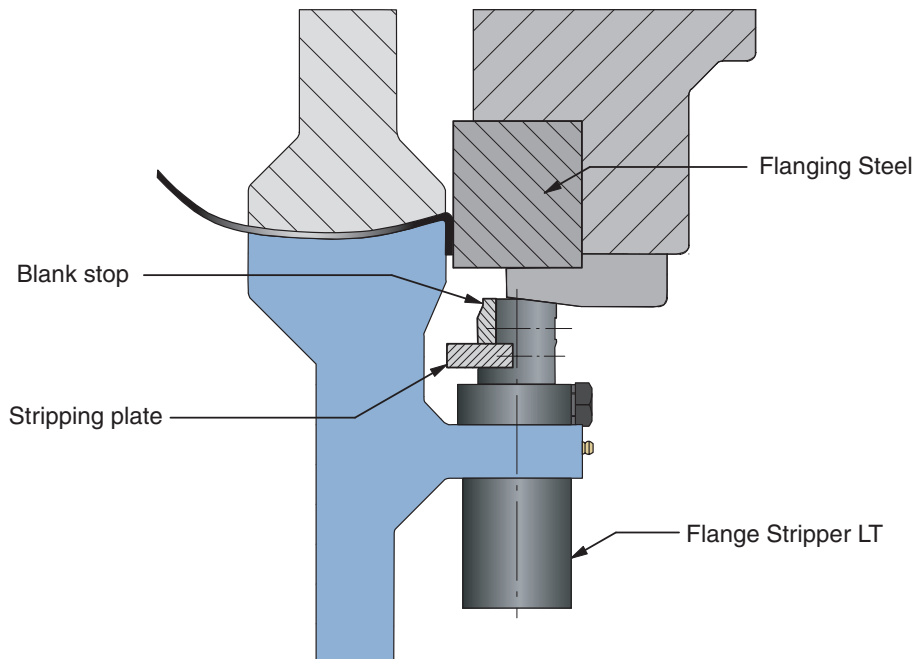
The Flange Stripper's stripping force is provided by an M2 Gas Spring with an initial force of 200 daN. The Gas Spring is inverted and fitted into the Flange Stripper.

During try-out and maintenance, the Slide and/or gas spring can easily be removed by unscrewing the Guide Bolt. Once the Guide Bolt is unscrewed, the Slide can be lifted up and the gas spring removed. The Slide can now be replaced and operated by hand during try-out.

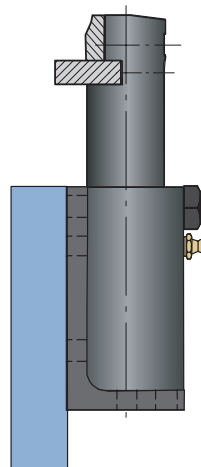
The Flange Stripper is equipped with a grease nipple, which after initial greasing should be greased every 100'000 strokes.

The Stripper Plate and the Blank Stop is to be manufactured by the tool maker to the desired profile and attached to the Flange Stripper using an M6 bolt.

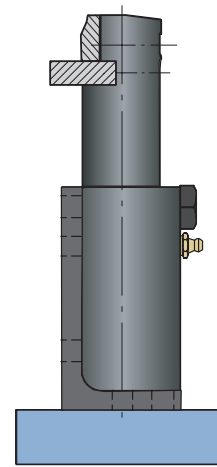
## Mounting options



LT - Top mount

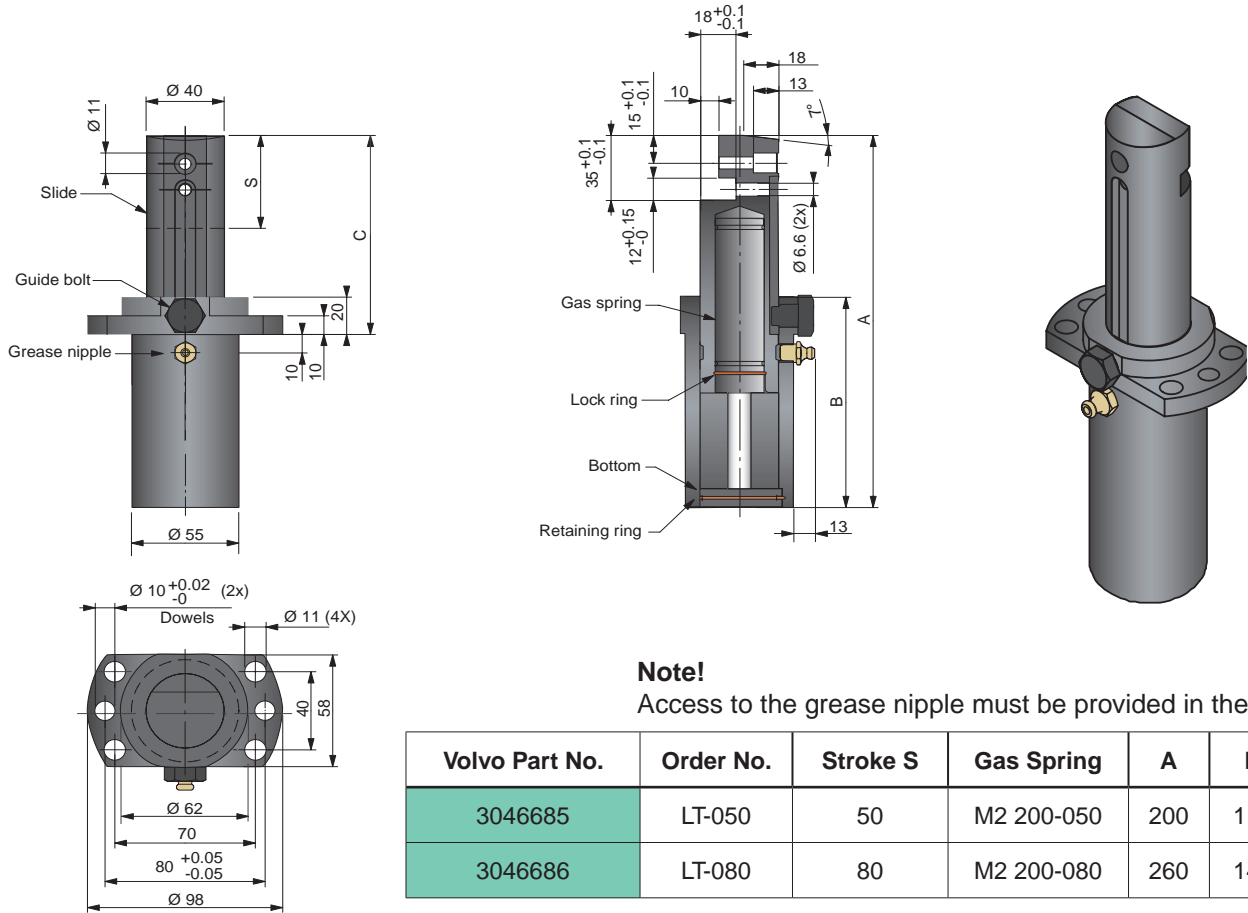


LW - Wall mount

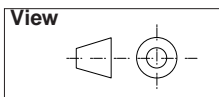
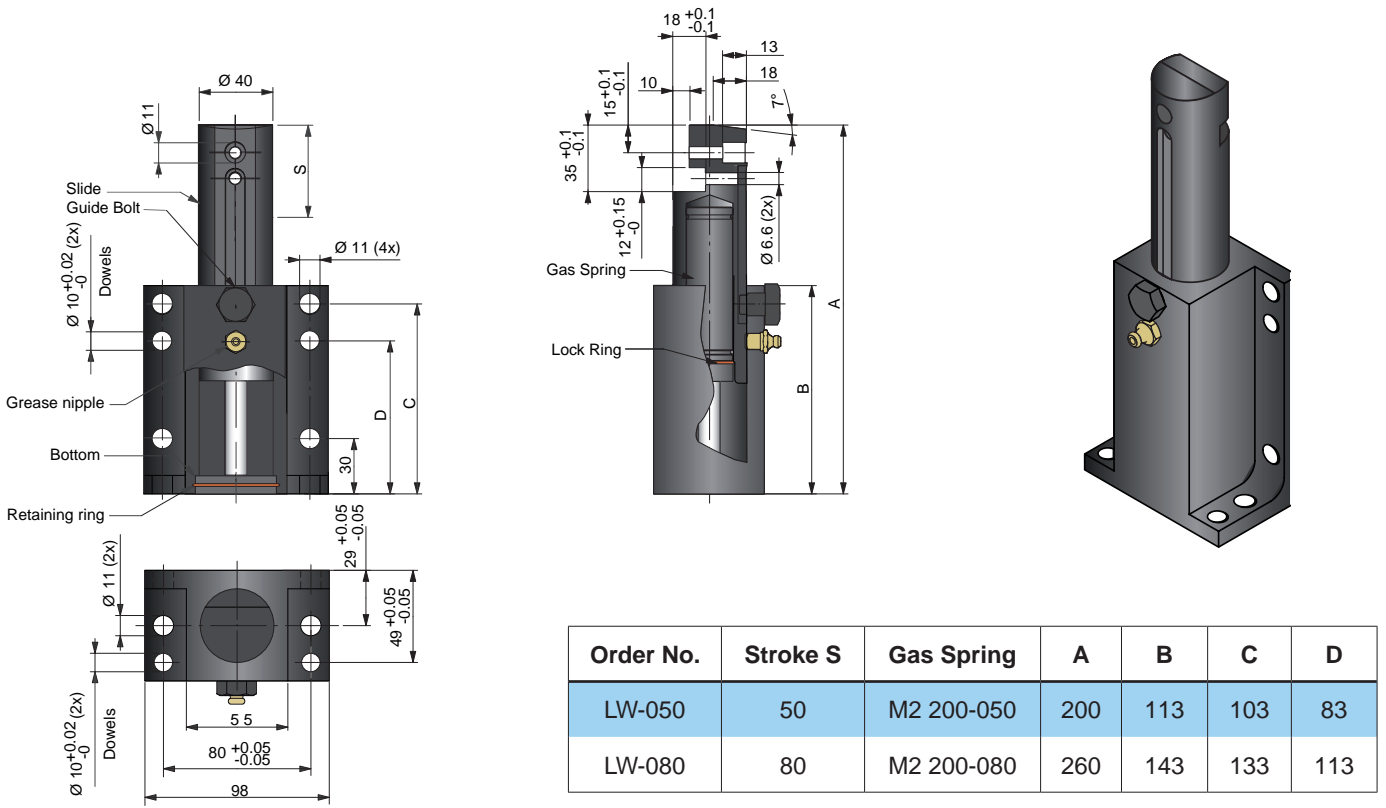


LW - Bottom mount

# Dimensions LT - Top Mount



# Dimensions LW - Wall Bottom Mount





The Safer Choice

- 1 ABOUT THE COMPANY
- 2 GAS SPRINGS INCLUDING STANDARD MOUNTS
- 3 SPECIAL MOUNTS
- 4 GAS LINK SYSTEM
- 5 PROBLEM SOLVERS AND ACCESSORIES
- 6 LIFTERS
- 7 MACHINE AND VEHICLES
- 8 SERVICE AND MAINTENANCE
- 9 PIERCING AND FORMING UNITS / CAMS
- 10 CONTROLLABLE GAS SPRINGS



For more information see our website

[www.kaller.com](http://www.kaller.com)